

ANNUAL REVIEW

80th

Anniversary
edition

2017-2018



apd

WESTERN CAPE
ASSOCIATION FOR
PERSONS WITH
DISABILITIES

TM WCAPO

Contents

3 What we stand for

4 Chairperson's &
Director's reports

5 Service stats

6 80th Birthday

7 Treasurer's report

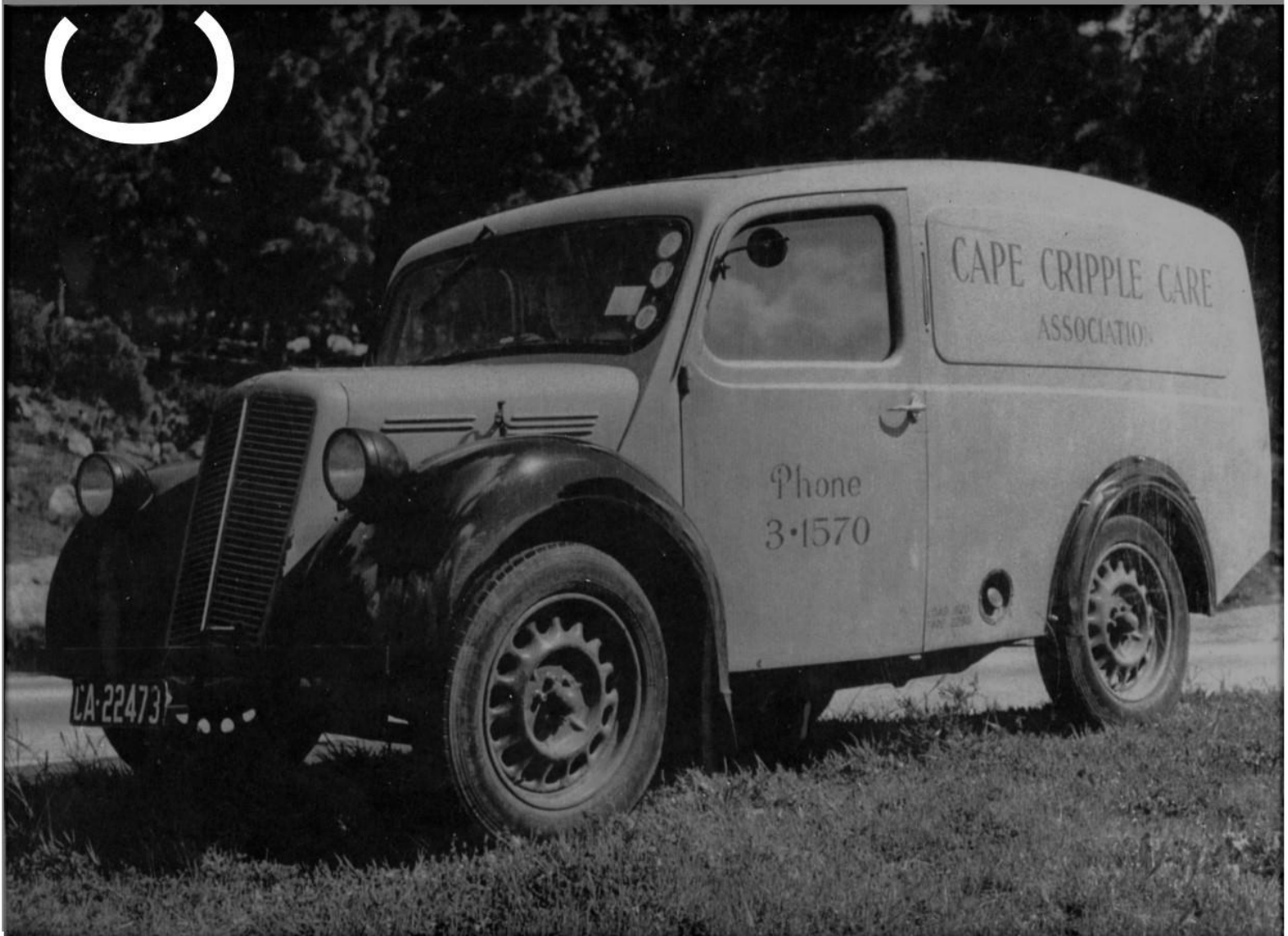
8 Where it all started...

9 Timeline

12 80 years of service

14 80 years of people

16 Acknowledgements



Vision

an inclusive society in which persons with disabilities are equal & active citizens

Mission

To work together with persons with disabilities and their families in facilitating social development and upliftment services whereby they take the lead in removing barriers and achieving independence.

Core Values

Respect

We believe that all people are deserving of respect & dignity, and everyone is to be treated with fairness and integrity

Empowerment

We embrace diversity and recognise the contribution of all individuals while including beneficiaries, volunteers, sponsors in staff in planning and decision-making

Inclusion

We strive towards independence and equality of all people and undertake to build human capacity on every level of our organisation

What we stand for



Chairperson's report

Since the newly elected committee entrusted the task of chairperson to me, I realised the immense responsibility to take the WCAPD to an economically sustainable level.

No stone was left unturned in the strategic planning of financial security for the future. Drastic measures were established and the outcome thereof already proving to be in the best interest of the association & our beneficiaries.

Restructuring of the organogram is never an easy task, but professional services implemented had a favourable result and no employee has been impacted negatively. No decision was made lightly, as we as WCAPD is responsible to support and strengthen 25 branches in the Western Province.

It is also important to me to be the voice of and for all persons with disabilities and advocate their right to universal accessibility, including work and employment.

I am excited to share our dynamic workforce's success with you in our annual report and on this note, thank you to you, our partner, for strengthening our service delivery to all persons with disabilities.

Thys Blom



Provincial Director's *Message*

2017/2018 was a milestone year in which WCAPD celebrated its 80th anniversary; 80 years during which we rendered social, developmental and supportive services, made a difference in the lives of persons with disabilities and were the voice of a marginalized group of people.

This milestone was celebrated during various special events:

- 80 young children with different disabilities, and those without, attended a children's party with puppets, dancing and games;
- a Vintage Family High Tea celebrated 80 years of giving hope when situations seemed impossible to overcome;
- a seminar in collaboration with UNISA addressed, inter alia, legislation and experiences of persons with disabilities at tertiary institutions;
- a Gala Dinner for 200 guests with guest artist Heinz Winkler and guest speaker Sheri Brynard as highlights; and
- a Golf Day concluded the year's celebrations.

But the year was not just about celebrations. After 80 years of unceasing and renewing services one can look back, give yourself a tap on the shoulder and sit backwards. For 80 years, however, we at WCAPD learned to stay investigative, constantly asking whether persons with disabilities (and their families) are fully included within society, whether barriers are sufficiently challenged and whether the role of the organization remains relevant.

80 years of experience, but we realise and adhere to the fact that thinking needs to be innovative and new services are needed daily. We are grateful for the contributions the organization has been able to make towards the lives of persons with disabilities through various services over 80 years. We remain thankful for every contribution and investment made by different people and groups within and without the WCAPD family.

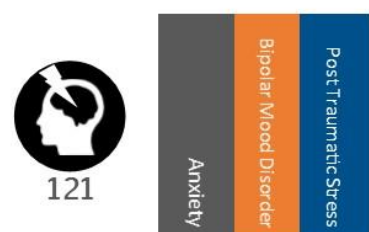
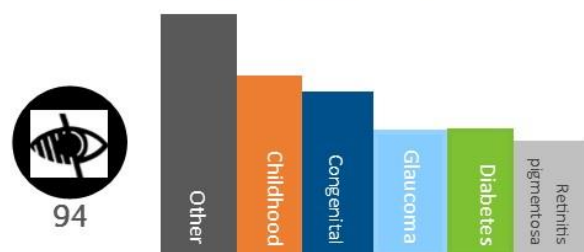
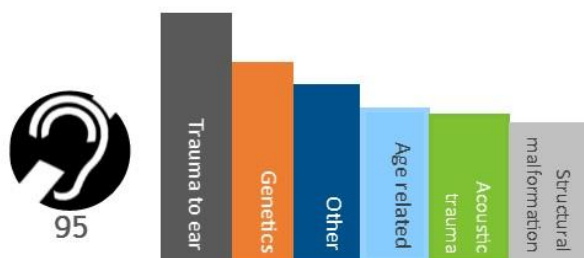
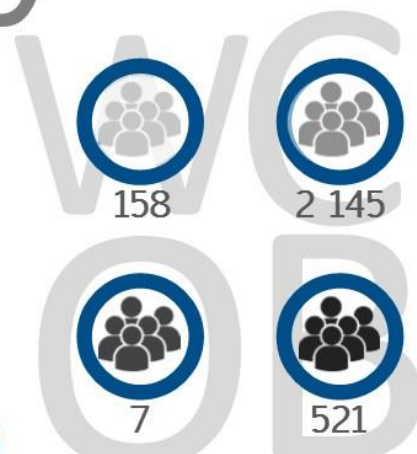
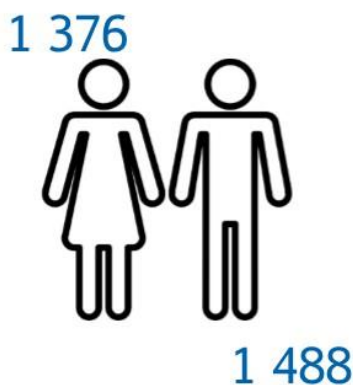
Now, we are aware of the necessity of our services and commit ourselves to the service of persons with disabilities for many years to come.

Elmien Grobbelaar

service

summary

clients



impairments



impact

* Statistics received from 17 Branches

80th birthday celebrations

children's
party



high tea

seminar



Gala Dinner

Treasurer's report



The annual financial statements for the year 2017-2018 year were presented to the Annual General Meeting (AGM) accompanied by the auditor's report for the year. It is pleasing to note that the audit have not revealed any issues with the accounting practices and financial management at Western Cape Association for Persons with Disabilities.

The net deficit for the 2018 financial year amounted to R556 361, against a deficit of R2 063 838 during the 2017 financial year. Each year the deficit is financed with the fair value adjustment of investments and profit on sale of investments. This adjustment for 2018 was a profit of R401 885.

The total income of the organization increased from R3 436 400 in 2017 to R4 520 068 in 2018. Total expenses decreased from R5 500 238 in 2017 to R5 076 429 in 2018. The increase in income is mainly attributable to the increase in income from Trusts and Bequests.

Our staff expense remains our largest expense and unfortunately we have to reduce our staff cost. During the 2018 year staff expenses decreased by 7%.

Trust Funds and bequests amounting to R1 571 900 were received during the year. (2017: R476 529)

The market value of the investments amounted to R11 072 345 at 31 March 2018 (2017: R11 833 234). Money on Money Market investments and in bank accounts was R2 226 636 on 31 March 2018. (2017: R1 327 148)

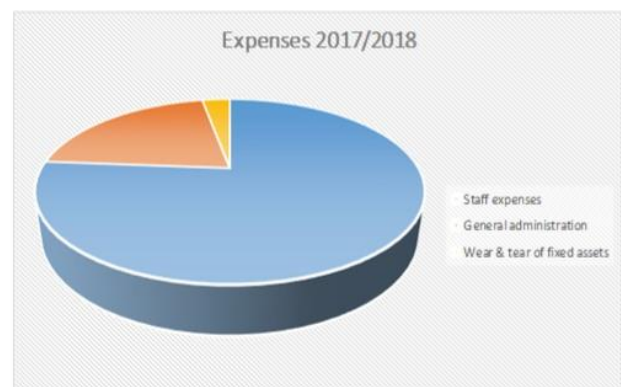
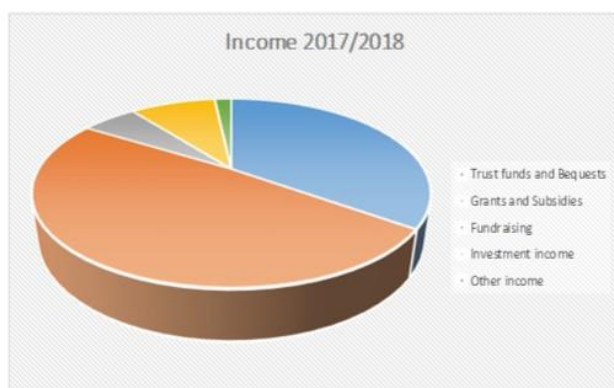
Conclusion

Looking at the 2018 results it is clear that the, Western Cape Association for persons with disabilities, through its directors, management committee and staff, continue to take very bold steps into protecting the future of our organization.

Western Cape APD is still on a sound financial footing with a strong balance sheet. We look forward to further cost savings measures implemented by the Management Committee, Director and staff.

Chris Botha

income



expenses

It all started in 1937

It was in Cape Town that the community first showed that it was aware that physical disability created problems which could be prevented if the necessary services were provided.

As early as 1923 the Society for the Protection of Child Life in Cape Town instituted a fund to provide splints and surgical requisites for disabled children, which later became known as the Invalid Children's Aid Committee, and finally the Maitland Cottage Home Society when it became autonomous.

In 1926 Lady Michaelis opened her home in Plumstead as an orthopaedic hospital with 48 beds. As a result of an appeal by the Cape Hospital Board, the Women's Hospital Auxiliary was formed under the patronage and leadership of her Royal Highness, Princess Alice of Athlone. The Princess Alice Home was built and over time became the Princess Alice Orthopaedic Hospital.

In 1935 a fund was established in memory of Dr. Pieter Moll, the father of orthopaedic surgery in this country. This became known as the Pieter Moll Aid Fund and was designed to financially assist all research projects into orthopaedic issues, and the training of doctors and specialists. In 1936 St. Joseph's Home in Phillipi was opened by the Pallotine Missionary Sisters to provide mainly for chronic cases. Facilities in general hospitals were improving, with both Groote Schuur Hospital and Somerset Hospital including Orthopaedic Departments.

By 1937 hospital accommodation had been provided but there was no system in place for contacting cases, arranging for diagnosis and subsequent after-care for patients who were discharged from hospital.

The need for a co-ordinating body was strongly felt and it was for this reason that those interested in the problem and, in particular, Dr. Pieter Roux and Mrs H.C. Horwood formed the Cape Cripple Care Association on the 25 February 1937, with Mr J.B. Kipps as its first Chairman.



CARE OF CRIPPLES

AGENDA

FOR MEETING TO BE HELD IN THE ARMS BOARD ROOM
AT 11 a.m. THURSDAY - FEBRUARY 25th, 1937.

1. ELECTION OF CHAIRMAN.
2. ELECTION OF SECRETARY.
3. NOTICE CONVENING THE MEETING.
4. BRIEF OUTLINE OF PRESENT POSITION IN CAPE TOWN.
5. PHYSICAL NEEDS OF CRIPPLES - DR. ROUX
6. EDUCATIONAL AND SOCIAL NEEDS OF CRIPPLES - DR. VAN SCHALKWYK.



1937	Establishment of Cape Cripple Care	
	Donation from Lord Nuffield allows for establishment of the National Council for the Care of Cripples in South Africa	
	AGMs suspended for duration of WW2	1939
1945	Beginning of 1-year training in orthopaedic nursing, headed by Mrs Horwood, later taken over by Dept. Health	
	Establishment of urban clinics in Aspeling Str Wynberg, Bokmakierie, Windermere & Vasco	1948
1950	Rural clinics established in George and Worcester	
	Worcester Cripple Care established & first visiting orthopaedic surgeon paid by the Association	1953
1955	Establishment of rural clinics & Branches in Beaufort West, Bellville, Paarl & Oudtshoorn - 1962	
	Association's Rehabilitation Committee assists in establishing Paraplegic Unit at Conradie Hospital	1963
1964	Association identifies need for social service support upon discharge from hospital & builds up team of social workers	
	Various hostels established to house clients undergoing rehabilitation	1967
1969	Association takes over CAFDA's Industrial Training Centre in Athlone	
	The Association begins looking into measures to enable persons with disabilities to move independently in the community	1970
1972	Rehabilitation Training Centre & Nora Roux hostel in Athlone opened, accommodating 75 trainees	
	Identification of need for protective employment & establishment of workshops in Guguletu & Ocean View	1973 - 1974
1976	Heide Street cottage (Athlone) & "The Bridges" (Bonteheuwel) used as stepping stone towards independent living - 1977	
	Establishment of Access Committee looking at access issues with the City Council	1978
1979	Association began pilot project for education of learners with disabilities. Taken over within 1 year by Dept of Education as Astra School.	
	Pilot scheme for home-based care launched, and home industry project	1982

1983	City Council issues parking discs to drivers with disabilities Name change to Assn. for the Physically Disabled (WC) Wallace Anderson Home opened in Riversdale	
	Opening of Bromilow-Downing Independent Living Centre	1985
1989	Purchase of property on the corner of Klipfontein Road & Milner Roads for building of resource centre. Later sold in ____	
	Highest recorded annual client intake to Rehabilitation Training Centre, particularly psychosocial impairments	1993
1994	Closure of Bromilow-Downing Independent Living Centre due to financial constraints	
	Director presents a paper at Rehabilitation International conference in New Zealand	1996
1999	First occupational therapist employed Independent Living Centre re-opens at Conradie Hospital Association separates into a Provincial office and a Branch	
	RS2000 model for establishment of clear business principles in management of protective workshops is developed, and instituted at Branches	1996
2002	Association purchases premises at 2 Begonia Str, Milnerton First website is launched Bergrivier, Witzenberg & Helderberg APDs are established	
	Klipfontein Rd property sold Association initiates research in Vredenburg on amount of out-of-school children	2005
2006	Name changes to present name with brand new logo Independent Living Centre moves to Begonia Str a.k.a. Roll-In Shop 6 Branches participate in Siyanceda Youth Service Program run by CMH	
	Justice Pat Tebbutt retires as Honorary President of the Association, after 32 years	2009
2011	Peer Support programme launched Association joins cyberge with platforms on Facebook & Twitter	
	First adapted vehicle is purchased Begonia street property sold and purchase of 320 Koeberg Road.	2015
2017	80th birthday celebrations dominate the year!	

Past & Present Presidents



Prof. Lewer-Allen
1954 - 1975



Justice Pat Tebbutt
1976 - 2010



Mr Michael Bagraim
2010 - present

Past & Present Chairpersons



Mr JW Kipps
1937 - 1939



Mrs HC Horwood
1939 - 1948



Dr Norah Roux
1948 - 1958



Mr Leslie Bisset
1958 - 1975



Dr Reith Goldschmidt
1976 - 1978



Prof. Bromilow-Downing
1978 - 1980



Dr Allie Key
1980 - 1983



Prof. George Dall
1983 - 1991



Dr Jim Crosier
1991 - 1993



Mr Peter Collis
1994 - 1996



Mr Peter Oscroft
1997 - 2000



Mr Ron Hendricks
2001 - 2005



Mr Thys Blom
2005 - 2013



Ds Edward Orsmond
2013 - 2016



Mr Jeremy Hazell
2016 - 2017



Mr Thys Blom
2017 - present

Past & Present Directors

Miss H. Monkhouse 1940 - 1944
Miss N. Salmon 1945
Miss Engels 1946
Miss M. Newlands 1947

Miss N. Coram 1948 - 1950
Mrs F. Liebenberg (nee Jurgens) 1950 - 1953
Mrs F. von Moltke 1952 - 1955



Mrs Jeanne Wilson
1955 - 1983



Ms Shelagh Hurford
1983 - 1998



Mr Johan Joubert
1998 - 2013



Mrs Neva Smith
2013 - 2017

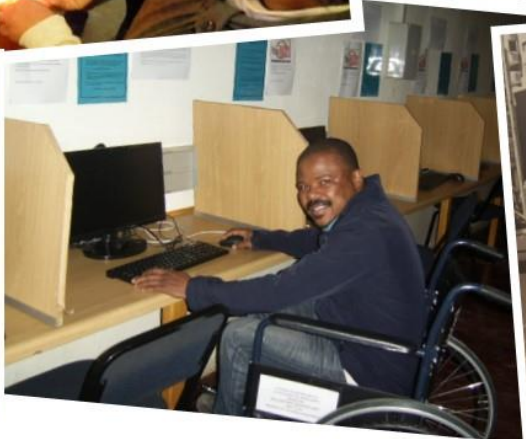


Ms Elmien Grobbelaar
2013 - present



80 years





of service



80 years





of
people



Branches

Beaufort West APD • Bergrivier APD • Breede Valley APD • Cape Town APD • ChangeAbility •
 Drakenstein APD • Goukam Neuro. Life Assn • George APD • Heidelberg APD • Hessequa APD •
 Hout Bay APD • Jo-Dolphin Swartland APD • Knysna APD • Laingsburg APD • Mossel Bay APD •
 Ocean View APD • Olifantsrivier APD • Oudtshoorn APD • Overstrand APD •
 Paarl Stimulation Centre • Robertson House • Die Sterreweg • Tembaletu Day Centre •
 Tygerberg APD • Wallace Anderson Home • West Coast APD • Witzenberg APD

Management Committee

Honorary President : Mr Michael Bagraim | Honorary Vice-Presidents : Mr Peter Oscan & Mrs Alida Basson |
 Chairperson : Mr Thys Blom | Vice-Chairpersons : Mr Michael Koch & Ms Elwyn Hansby-Consul |
 Treasurer : Mr Chris Botha | Members : Ms Cynthia Boltman; Mr Ian Hovey; Mr Richard Marshall
 Legal Advisors : Adv. Joel Krige; Bagraim & Associates

Acknowledgements

The Association extends our sincere and grateful thanks to all those who assist us in our mission, be they volunteers, donors, staff, partner organisations, sponsors or friends. It has been said that no man is an island, and that goes for organisations as well. We could not have achieved all that we have during this year without the collaboration of partners, the support of sponsors and donors, the dedication and hard work from volunteers and staff alike, and the guidance of our leaders.

Partners



Personnel

Barbara Foguet – Chief Occupational Therapist (from 26 March 2018)
Celista Gerber - Regional Manager : Chief Social Worker (from 1 March 2018)
Debbi Windell - PA to Provincial Directors (till 30 June 2017)
Elmien Grobbelaar - Provincial Director
Erica du Toit - Awareness & Sensitisation Coordinator
Esme Walters - Peer Support Administrator
Francis Robyn-Pretorius - Fundraising & Events Coordinator
Gerald Meyer - Reception
Le-Ana van der Merwe - Chief Social Worker; CEO Southern Cape (from 1 April 2018)
Lizelle Ferus - Occupational Therapist (till 31 January 2018)
Loren Farmer - Finance Clerk
Madeline Voigt - Occupational Therapist Manager
Natasha Vinson - General Assistant (from 1 September 2017)
Neva Smith - Provincial Director – Professional services (till 31 December 2017)
Roeline Robyn - Chief Social worker (till 29 February 2018)
Tay-Yibah Jassiem - Occupational Therapist (till 30 June 2017)
Terca Barron - Admin Assistant (till 7 November 2017) & PA to Directors (from 8 November 2017)
Trigeta Christians - Manager : Finance
William Guillum-Scott - Marketing Coordinator (till 31 January 2018)

